

BS EN ISO 3098-1:2015



BSI Standards Publication

Technical product documentation — Lettering

Part 1: General requirements

bsi.

...making excellence a habit.™

National foreword

This British Standard is the UK implementation of EN ISO 3098-1:2015. It supersedes BS EN ISO 3098-0:1998 which is withdrawn.

The UK participation in its preparation was entrusted to Technical Committee TDW/4, Technical Product Realization.

A list of organizations represented on this committee can be obtained on request to its secretary.

This publication does not purport to include all the necessary provisions of a contract. Users are responsible for its correct application.

© The British Standards Institution 2015.
Published by BSI Standards Limited 2015

ISBN 978 0 580 85576 4
ICS 01.100.01

Compliance with a British Standard cannot confer immunity from legal obligations.

This British Standard was published under the authority of the Standards Policy and Strategy Committee on 31 March 2015.

Amendments/corrigenda issued since publication

Date	Text affected
------	---------------

English Version

Technical product documentation - Lettering - Part 1: General requirements (ISO 3098-1:2015)

Documentation technique de produits - Écriture - Partie 1:
Exigences générales (ISO 3098-1:2015)

Technische Produktdokumentation - Schriften - Teil 1:
Grundregeln (ISO 3098-1:2015)

This European Standard was approved by CEN on 12 December 2014.

CEN members are bound to comply with the CEN/CENELEC Internal Regulations which stipulate the conditions for giving this European Standard the status of a national standard without any alteration. Up-to-date lists and bibliographical references concerning such national standards may be obtained on application to the CEN-CENELEC Management Centre or to any CEN member.

This European Standard exists in three official versions (English, French, German). A version in any other language made by translation under the responsibility of a CEN member into its own language and notified to the CEN-CENELEC Management Centre has the same status as the official versions.

CEN members are the national standards bodies of Austria, Belgium, Bulgaria, Croatia, Cyprus, Czech Republic, Denmark, Estonia, Finland, Former Yugoslav Republic of Macedonia, France, Germany, Greece, Hungary, Iceland, Ireland, Italy, Latvia, Lithuania, Luxembourg, Malta, Netherlands, Norway, Poland, Portugal, Romania, Slovakia, Slovenia, Spain, Sweden, Switzerland, Turkey and United Kingdom.



EUROPEAN COMMITTEE FOR STANDARDIZATION
COMITÉ EUROPÉEN DE NORMALISATION
EUROPÄISCHES KOMITEE FÜR NORMUNG

CEN-CENELEC Management Centre: Avenue Marnix 17, B-1000 Brussels

Foreword

This document (EN ISO 3098-1:2015) has been prepared by Technical Committee ISO/TC 10 "Technical product documentation" in collaboration with CCMC.

This European Standard shall be given the status of a national standard, either by publication of an identical text or by endorsement, at the latest by September 2015, and conflicting national standards shall be withdrawn at the latest by September 2015.

Attention is drawn to the possibility that some of the elements of this document may be the subject of patent rights. CEN [and/or CENELEC] shall not be held responsible for identifying any or all such patent rights.

This document supersedes EN ISO 3098-0:1997.

According to the CEN-CENELEC Internal Regulations, the national standards organizations of the following countries are bound to implement this European Standard: Austria, Belgium, Bulgaria, Croatia, Cyprus, Czech Republic, Denmark, Estonia, Finland, Former Yugoslav Republic of Macedonia, France, Germany, Greece, Hungary, Iceland, Ireland, Italy, Latvia, Lithuania, Luxembourg, Malta, Netherlands, Norway, Poland, Portugal, Romania, Slovakia, Slovenia, Spain, Sweden, Switzerland, Turkey and the United Kingdom.

Endorsement notice

The text of ISO 3098-1:2015 has been approved by CEN as EN ISO 3098-1:2015 without any modification.

Contents

	Page
Foreword	iv
1 Scope	1
2 Normative references	1
3 Terms and definitions	1
4 General requirements	2
5 Dimensions	2
5.1 Nominal size.....	2
5.2 Location of central lines.....	3
5.3 Range of nominal sizes.....	4
5.4 Lettering angle.....	5
5.5 Types of lettering.....	5
5.6 Underlined and overlined texts or text fields.....	7
6 Designation	8
Bibliography	9

Foreword

ISO (the International Organization for Standardization) is a worldwide federation of national standards bodies (ISO member bodies). The work of preparing International Standards is normally carried out through ISO technical committees. Each member body interested in a subject for which a technical committee has been established has the right to be represented on that committee. International organizations, governmental and non-governmental, in liaison with ISO, also take part in the work. ISO collaborates closely with the International Electrotechnical Commission (IEC) on all matters of electrotechnical standardization.

The procedures used to develop this document and those intended for its further maintenance are described in the ISO/IEC Directives, Part 1. In particular the different approval criteria needed for the different types of ISO documents should be noted. This document was drafted in accordance with the editorial rules of the ISO/IEC Directives, Part 2. www.iso.org/directives

Attention is drawn to the possibility that some of the elements of this document may be the subject of patent rights. ISO shall not be held responsible for identifying any or all such patent rights. Details of any patent rights identified during the development of the document will be in the Introduction and/or on the ISO list of patent declarations received. www.iso.org/patents

Any trade name used in this document is information given for the convenience of users and does not constitute an endorsement.

For an explanation on the meaning of ISO specific terms and expressions related to conformity assessment, as well as information about ISO's adherence to the WTO principles in the Technical Barriers to Trade (TBT) see the following URL: [Foreword - Supplementary information](#)

The committee responsible for this document is ISO/TC 10, *Technical product documentation*, Subcommittee SC 1, *Basic conventions*. This second edition of ISO 3098-1 cancels and replaces the first edition of ISO 3098-0:1997, of which it constitutes a minor revision.

ISO 3098 consists of the following parts, under the general title *Technical product documentation — Lettering*:

- *Part 1: General requirements*
- *Part 2: Latin alphabet, numerals and marks*
- *Part 3: Greek alphabet*
- *Part 4: Diacritical and particular marks for the Latin alphabet*
- *Part 5: CAD lettering of the Latin alphabet, numerals and marks*
- *Part 6: Cyrillic alphabet*

Technical product documentation — Lettering —

Part 1: General requirements

1 Scope

This part of ISO 3098 specifies the general requirements for lettering, in accordance with the other parts of ISO 3098, to be used in technical product documentation (in particular on technical drawings). It includes basic conventions as well as rules for the application of lettering using the following techniques:

- a) free-hand lettering (by means of an underlaid “grid”);
- b) templates and manual lettering instruments;
- c) dry transfer systems;
- d) numerically controlled lettering and draughting systems.

2 Normative references

The following documents, in whole or in part, are normatively referenced in this document and are indispensable for its application. For dated references, only the edition cited applies. For undated references, the latest edition of the referenced document (including any amendments) applies.

ISO 128-20, *Technical drawings — General principles of presentation — Part 20: Basic conventions for lines*

3 Terms and definitions

For the purposes of this document, the following terms and definitions apply.

3.1

central line

imaginary line in the middle of each line or line element which is a constitutive part of a graphic character set

Note 1 to entry: Lines may be drawn by means of tubular technical pens conforming with ISO 9175-1.

Note 2 to entry: The central line is the basic datum for the design of tools for lettering, e.g. engraving tools for templates, programs for lettering generators.

3.2

graphic character set

finite set of different graphic characters in a fixed type of lettering, including letters of a certain alphabet, numerals, diacritical marks, punctuation marks and additional graphical symbols, that is considered complete for a given purpose

Note 1 to entry: See ISO/IEC 2382-4:1999, 04.03.

3.3

lettering

3.3.1

lettering

procedure of writing graphic characters taken from a graphic character set on a (technical) drawing carrier (in addition to the graphical representation)

3.3.2

lettering

whole of the nongraphical information on a (technical) drawing carrier (text, instructions, dimensions, etc.)

3.3.3

lettering

whole of the graphic characters of a graphic character set which can be used for transferring non-graphical information on to a (technical) drawing carrier

4 General requirements

4.1 The basic characteristics required of lettering are given in [4.2](#) to [4.4](#).

4.2 Legibility, which shall be maintained by a space between characters of twice the line width used for lettering. This spacing may be reduced to one line width for a better visual effect with combinations of particular characters.

EXAMPLE LA, TV or Tr

4.3 Suitability for the generally used copying processes (dialo copying, microfilming, telefax, etc.).

4.4 Suitability for numerically controlled draughting systems.

5 Dimensions

5.1 Nominal size

The nominal size of lettering is defined by the height (h) of the outline contour of the upper-case (upper case) letters (see [Figure 1](#) and [Tables 1](#) and [2](#)).

The dimensions shown in [Figures 1](#) to [3](#) as applied to the Latin (L) alphabet shall also be applied to the Cyrillic (C) and Greek (G) alphabets.

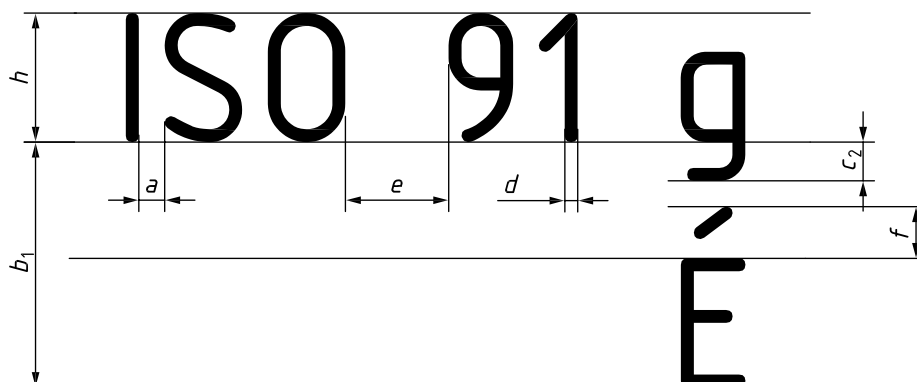


Figure 1

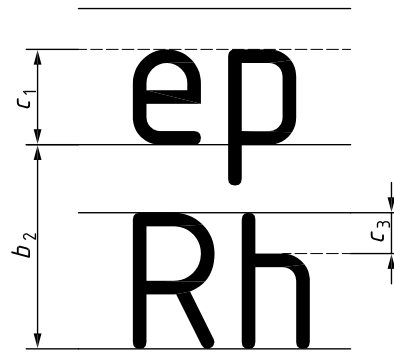


Figure 2

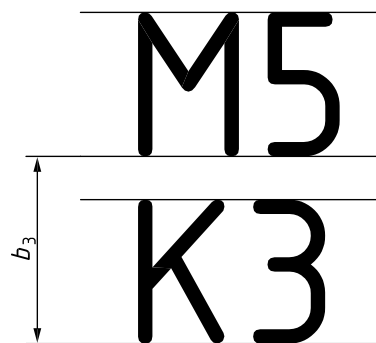


Figure 3

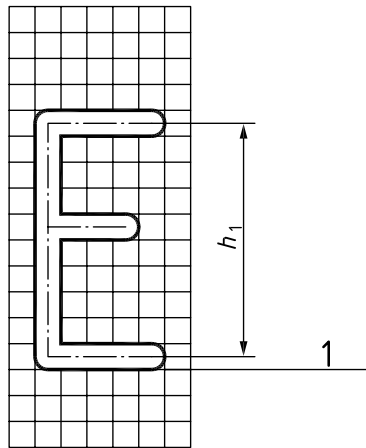
5.2 Location of central lines

The nominal size (h) and the spacing between characters (a) shall be taken as the basis for defining the central line (see [Figures 4](#) and [5](#)). For other dimensions, see [Tables 1](#) and [2](#).

$$h_1 = h - d$$

$$a_1 = a + d$$

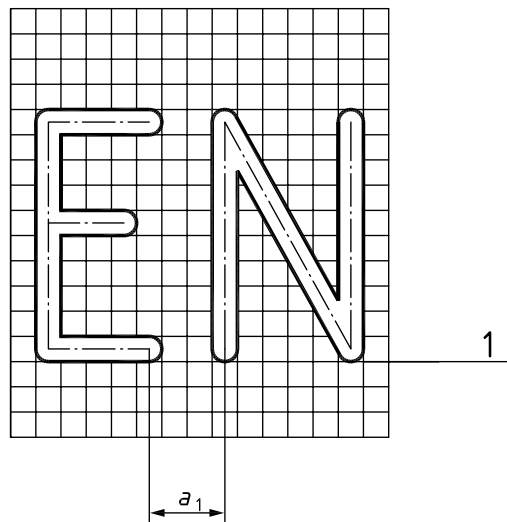
When CAD lettering is used (see ISO 3098-5), the same sizes are required as for other techniques.



Key

1 baseline

Figure 4



Key

1 baseline

Figure 5

5.3 Range of nominal sizes

The range of nominal sizes is specified as follows:

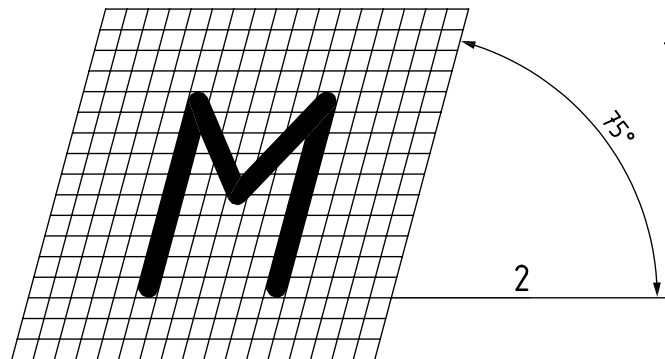
1,8 mm; 2,5 mm; 3,5 mm; 5 mm; 7 mm; 10 mm; 14 mm; 20 mm

The multiple of $\sqrt{2}$ in the range of heights for lettering is derived from the standardized progression of dimensions for paper sizes (see ISO 216).

The line widths shall be in accordance with ISO 128-20 and the same line width shall be used for both upper-case and lower-case letters.

5.4 Lettering angle

The lettering may be vertical (upright), see [Figures 1 to 5](#), or inclined (sloped) to the right at 75° from the horizontal (see [Figure 6](#)).



Key

- 1 inclination (slope)
- 2 baseline

Figure 6

5.5 Types of lettering

The types of lettering are as follows:

- lettering type A, vertical (V) Dimensions specified in [Table 1](#)
- lettering type A, sloped (S)

- lettering type B, vertical (V) Dimensions specified in [Table 2](#)
 (preferred application)
- lettering type B, sloped (S)

- lettering type CA, vertical (V)
- lettering type CA, sloped (S) See ISO 3098-5
- lettering type CB, vertical (V) (for application of numerically controlled draughting via CAD)
 (preferred application)
- lettering type CB, sloped (S)

Table 1 — Dimensioning of lettering type A

Dimensions in millimetres

Characteristic		Multiple of h	Dimensions							
Lettering height	h	$(14/14)h$	1,8	2,5	3,5	5	7	10	14	20
Height of lower-case letters (x-height)	c_1	$(10/14)h$	1,3	1,8	2,5	3,5	5	7	10	14
Tail of lower-case letters	c_2	$(4/14)h$	0,52	0,72	1	1,4	2	2,8	4	5,6
Stem of lower-case letters	c_3	$(4/14)h$	0,52	0,72	1	1,4	2	2,8	4	5,6
Area of diacritical marks (upper-case letters)	f	$(5/14)h$	0,65	0,9	1,25	1,75	2,5	3,5	5	7
Spacing between characters	a	$(2/14)h$	0,26	0,36	0,5	0,7	1	1,4	2	2,8
Minimum spacing between baselines ^a	b_1	$(25/14)h$	3,25	4,5	6,25	8,75		17,5	25	35
Minimum spacing between baselines ^b	b_2	$(21/14)h$	2,73	3,78	5,25	7,35	10,5	14,7	21	29,4
Minimum spacing between baselines ^c	b_3	$(17/14)h$	2,21	3,06	4,25	5,95	8,5	11,9	17	23,8
Spacing between words	e	$(6/14)h$	0,78	1,08	1,5	2,1	3	4,2	6	8,4
Line width	d	$(1/14)h$	0,13 ^d	0,18 ^d	0,25	0,35 ^d	0,5	0,7 ^d	1	1,4 ^d
^a Lettering style: upper-case and lower-case letters with diacritical marks (see Figure 1). ^b Lettering style: upper-case and lower-case letters without diacritical marks (see Figure 2). ^c Lettering style: upper-case letters only (see Figure 3). ^d Rounded values; the values of the dimensions c_1 to e are calculated from the rounded values of d .										

Table 2 — Dimensioning of lettering type B

Dimensions in millimetres

Characteristic		Multiple of h	Dimensions							
Lettering height	h	$(10/10)h$	1,8	2,5	3,5	5	7	10	14	20
Height of lower-case letters (x-height)	c_1	$(7/10)h$	1,26	1,75	2,5 ^d	3,5	5 ^d	7	10 ^d	14
Tail of lower-case letters	c_2	$(3/10)h$	0,54	0,75	1,05	1,5	2,1	3	4,2	6
Stem of lower-case letters	c_3	$(3/10)h$	0,54	0,75	1,05	1,5	2,1	3	4,2	6
Area of diacritical marks (upper-case letters)	f	$(4/10)h$	0,72	1	1,4	2	2,8	4	5,6	8
Spacing between characters	a	$(2/10)h$	0,36	0,5	0,7	1	1,4	2	2,8	4
Minimum spacing between baselines ^a	b_1	$(19/10)h$	3,42	4,75	6,65	9,5	13,3	19	26,6	38
Minimum spacing between baselines ^b	b_2	$(15/10)h$	2,7	3,75	5,25	7,5	10,5	15	21	30
Minimum spacing between baselines ^c	b_3	$(13/10)h$	2,34	3,25	4,55	6,5	9,1	13	18,2	26
Spacing between words	e	$(6/10)h$	1,08	1,5	2,1	3	4,2	6	8,4	12
Line width	d	$(1/10)h$	0,18	0,25	0,35	0,5	0,7	1	1,4	2
^a Lettering style: upper-case and lower-case letters with diacritical marks (see Figure 1). ^b Lettering style: upper-case and lower-case letters without diacritical marks (see Figure 2). ^c Lettering style: upper-case letters only (see Figure 3). ^d Rounded values.										

5.6 Underlined and overlined texts or text fields

When a text or text field has to be underlined or overlined, it is recommended to interrupt the underlining or overlining line at all places where a lower-case letter has a tail (e.g. [Figure 7](#)) or where an upper-case letter has a diacritical mark (e.g. cedilla, tilde, umlaut; see [Figure 8](#)). If this is not feasible, the space between baselines shall be extended.

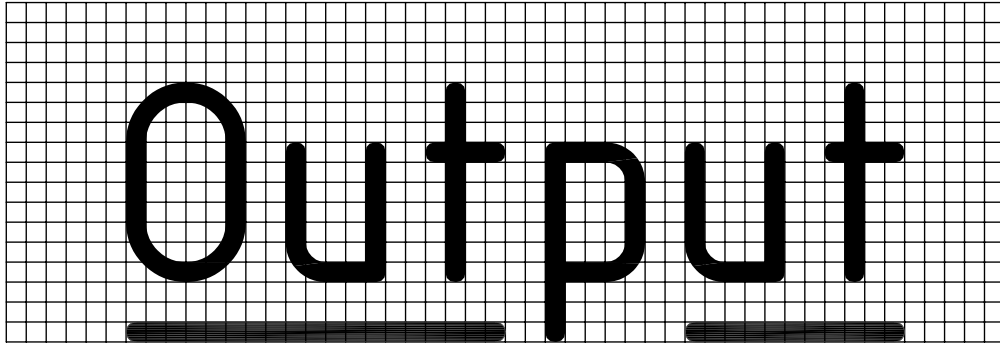


Figure 7

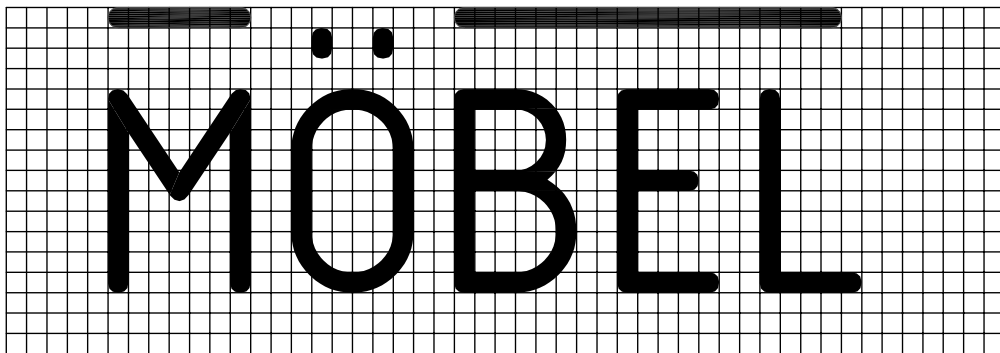


Figure 8

6 Designation

6.1 The designation of lettering types A and B shall comprise the following elements in the given order:

- a) "Lettering";
- b) reference to this part of ISO 3098, i.e. ISO 3098-1;
- c) the type of lettering ("A" or "B");
- d) the inclination of lettering ("V" or "S");
- e) the kind of alphabet ("L", "G" or "C");
- f) the nominal size of the lettering, in millimetres.

EXAMPLE 1 A graphic character set of lettering type B, vertical, Latin alphabet, of nominal size 5 mm, shall be designated as follows:

Lettering ISO 3098-1 - BVL - 5

EXAMPLE 2 A graphic character set of lettering type A, sloped, Greek alphabet, of nominal size 3,5 mm, shall be designated as follows:

Lettering ISO 3098-1 - ASG - 3,5

EXAMPLE 3 A graphic character set of lettering type B, sloped, Cyrillic alphabet, of nominal size 1,8 mm, shall be designated as follows:

Lettering ISO 3098-1 - BSC - 1,8

6.2 The designation of lettering types CA and CB shall comprise the following elements in the given order:

- a) "Lettering";
- b) reference to this part of ISO 3098, i.e. ISO 3098-1;
- c) the type of lettering ("CA" or "CB");
- d) the spacing arrangement [tabular (T) or proportional (P)];
- e) the inclination of lettering ("V" or "S");
- f) the kind of alphabet ("L", "G" or "C");
- g) the nominal size of the lettering, in millimetres.

EXAMPLE 1 A graphic character set of lettering type CB in tabular spacing arrangement, sloped, Latin alphabet, of nominal size 2,5 mm, shall be designated as follows:

Lettering ISO 3098-1 - CB TSL - 2,5

EXAMPLE 2 A graphic character set of lettering type CA in proportional spacing arrangement, vertical, Greek alphabet, of nominal size 3,5 mm, shall be designated as follows:

Lettering ISO 3098-1 - CA PVG - 3,5

Bibliography

- [1] ISO 128-1, *Technical drawings — General principles of presentation — Part 1: Introduction and index*
- [2] ISO 216, *Writing paper and certain classes of printed matter — Trimmed sizes — A and B series, and indication of machine direction*
- [3] ISO/IEC 2382-4:1999, *Information technology — Vocabulary — Part 4: Organization of data*
- [4] ISO 9175-1, *Tubular tips for hand-held technical pens using India ink on tracing paper — Part 1: Definitions, dimensions, designation and marking*

British Standards Institution (BSI)

BSI is the national body responsible for preparing British Standards and other standards-related publications, information and services.

BSI is incorporated by Royal Charter. British Standards and other standardization products are published by BSI Standards Limited.

About us

We bring together business, industry, government, consumers, innovators and others to shape their combined experience and expertise into standards-based solutions.

The knowledge embodied in our standards has been carefully assembled in a dependable format and refined through our open consultation process. Organizations of all sizes and across all sectors choose standards to help them achieve their goals.

Information on standards

We can provide you with the knowledge that your organization needs to succeed. Find out more about British Standards by visiting our website at bsigroup.com/standards or contacting our Customer Services team or Knowledge Centre.

Buying standards

You can buy and download PDF versions of BSI publications, including British and adopted European and international standards, through our website at bsigroup.com/shop, where hard copies can also be purchased.

If you need international and foreign standards from other Standards Development Organizations, hard copies can be ordered from our Customer Services team.

Subscriptions

Our range of subscription services are designed to make using standards easier for you. For further information on our subscription products go to bsigroup.com/subscriptions.

With **British Standards Online (BSOL)** you'll have instant access to over 55,000 British and adopted European and international standards from your desktop. It's available 24/7 and is refreshed daily so you'll always be up to date.

You can keep in touch with standards developments and receive substantial discounts on the purchase price of standards, both in single copy and subscription format, by becoming a **BSI Subscribing Member**.

PLUS is an updating service exclusive to BSI Subscribing Members. You will automatically receive the latest hard copy of your standards when they're revised or replaced.

To find out more about becoming a BSI Subscribing Member and the benefits of membership, please visit bsigroup.com/shop.

With a **Multi-User Network Licence (MUNL)** you are able to host standards publications on your intranet. Licences can cover as few or as many users as you wish. With updates supplied as soon as they're available, you can be sure your documentation is current. For further information, email bsmusales@bsigroup.com.

BSI Group Headquarters

389 Chiswick High Road London W4 4AL UK

Revisions

Our British Standards and other publications are updated by amendment or revision.

We continually improve the quality of our products and services to benefit your business. If you find an inaccuracy or ambiguity within a British Standard or other BSI publication please inform the Knowledge Centre.

Copyright

All the data, software and documentation set out in all British Standards and other BSI publications are the property of and copyrighted by BSI, or some person or entity that owns copyright in the information used (such as the international standardization bodies) and has formally licensed such information to BSI for commercial publication and use. Except as permitted under the Copyright, Designs and Patents Act 1988 no extract may be reproduced, stored in a retrieval system or transmitted in any form or by any means – electronic, photocopying, recording or otherwise – without prior written permission from BSI. Details and advice can be obtained from the Copyright & Licensing Department.

Useful Contacts:

Customer Services

Tel: +44 845 086 9001

Email (orders): orders@bsigroup.com

Email (enquiries): cservices@bsigroup.com

Subscriptions

Tel: +44 845 086 9001

Email: subscriptions@bsigroup.com

Knowledge Centre

Tel: +44 20 8996 7004

Email: knowledgecentre@bsigroup.com

Copyright & Licensing

Tel: +44 20 8996 7070

Email: copyright@bsigroup.com



...making excellence a habit.™